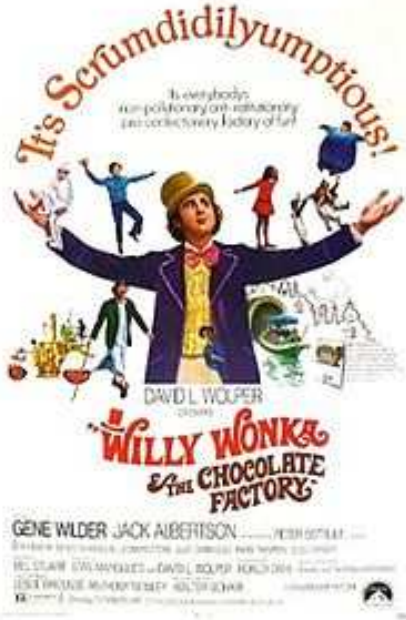




# ECHO



No. 6 Week 9, Term 2 2009 Tel 02 9834 3536 website: [www.erskinparkhs.com.au](http://www.erskinparkhs.com.au)



## CHOCOLATE DRIVE -SUPPORT

Many thanks to all parents and friends of the school who are supporting our yearly fundraiser. The proceeds from this P&C fundraiser assists all students' access to school facilities and new technologies. The generosity and altruism of students, staff and parents is also a valuable life skill.

## WESTERN SYDNEY REGION— MUSIC EXCURSION TO CHINA

On that note, I would like to acknowledge Mr Brad Fuge, a huge supporter of the school—and Mr Craig McGown for their efforts in assisting the families representing the school area in a Western Sydney Regional Music Group visit to China later this year. Their ability to provide a BBQ fundraiser for our students shows the exact spirit and support that is mirrored right across our school community through our chocolate drive.

Thank you to those families who have already acknowledged Mr McGown for his hard work and voluntary additional effort.

The optional nature of representing the school and DET at such events, is

a challenge for many families in sporting, cultural and academic pursuits at this time. With 1000 students, school assistance is very difficult and impossible outside of DET sanctioned activities. Ultimately parents choose and decide whether their child accepts these types of invitations and with that comes the published financial responsibility. Thank you for acknowledging the assistance given.

## SWINE FLU UPDATE

Many thanks to the parents who have—through no fault of their own—been obliged to take the necessary precautions with students returning from overseas holidays—or from Melbourne. The DET position on this is that if a child has travelled to Melbourne, they should be quarantined from school for SEVEN DAYS.

The same is true of staff if they have associated in Melbourne with 10 or more local school children. Some of our staff have family in Melbourne, or conferences/ courses to attend in these parts and have observed this with great precision. The proliferation of Swine Flu among younger children makes this necessary. DET have been closely guided by the advice of NSW Health and updates have been communicated faithfully to our school community. The edited version of the latest advice is listed below in italics:

*Through further discussions with NSW Health to clarify how to best implement the exclusion of staff and students who've been in greater metropolitan Melbourne, Mexico, Panama, USA, Canada and Japan.... As previously advised, **children** who have travelled to these locations will be required to stay away from school for seven days after their return to NSW. It is important that we take this advice seriously and make sure we follow it in all our schools. If there*

*are other members of the family who DID NOT travel with the child to the locations (above) they can continue to attend school.*

## LAPTOPS 4 LEARNING UPDATE

Year 9 students across the school will receive their laptops very soon as part of the Federal Government sponsored programme called 'Laptops 4 Learning'. Laptops will be formally issued to students and we will have a series of explanations and discussions with students and parent information when this occurs. There are strong policies and protocols on student use, management and security.

As part of Phase 1, the school receives new wireless connections for four buildings (Library, Science, TAS 1 and Art). This is a separate system and independent of the current wireless network across the school. In addition, 27 staff laptops are delivered in Phase 1 and are distributed chiefly to Year 9 staff. The completion of Phase 2 is eagerly anticipated, but the excitement and energy which accompanies this roll out will be a new challenge and opportunity for us all.

## TRAFFIC OFFENCES— AROUND SCHOOLS

I have had a reminder from the local Police of the current school zone penalties which apply to offences committed in school zones during posted school hours. To improve the safety of our children, penalties for many traffic and parking offences in school zones have been included here.

Presently, fines and demerit point penalties include:

*Speeding – minimum fines of \$128 and 4 demerit points.*

## 2009 P&C MEETING DATES TO PUT IN YOUR DIARY

Monday 29/6, 27/7, 31/8, 28/9, 26/10, 30/11  
7.00pm in School Admin. Block

*Approach children's crossing too quickly to stop safely – \$384 fine and 4 demerit points.*

*Double parking – \$231 fine and 2 demerit points.*

*Stopping on or near a children's crossing – \$308 and 2 demerit points.*

**JUNIOR PARENT-TEACHER NIGHT—  
TERM 2**

**The 7-10 Parent-Teacher Night will be held on July 9th (4-8pm). Please come along. (SRC BBQ available for dinner purchases!).**

**P&C MEETINGS/ P&C REPRESENTATIVES ON MERIT SELECTION PANELS**

Please feel free to attend P&C Meetings as listed below. Our thanks to members of the P&C for their commitment and interest in the school and their leadership on Merit Selection panels for new staff.

**YEAR 6 INTO 7 PROJECT—SCIENCE**

At present the school is involved with some significant links programmes with our partner schools—Blackwell PS and James Erskine PS. Our numeracy, Chinese and now Science programmes bring great opportunities for staff to share and exchange ideas and for students to experience high school and its expectations and opportunities.

Mrs Melville and Mrs Paul have worked very hard at delivering an inspiring and engaging Science programme to our future students. In addition, we are accessing the CSIRO 'Scientists in Schools' programme and linking closely with Longneck lagoon/ University of Western Sydney in actual scientific field work, technology use, computer mapping and data analysis. This enrichment

programme is targeting Year 8 Science students and commences early next term.

**MOTHERHOOD CALLS: SANDY GOLDER/ ALISON BILLIARDS/ TUE MOY/ BELLINDA BOYD/ JOANNE COOPER/ GEORGINA LINDSAY/ DIANA JUSIC—CONGRATULATIONS**

All of our above staff are currently on Maternity Leave (or about to exit). The celebration of this exciting stage of life is balanced with the reality that capable, engaging teachers are secured for the period of leave for each staff member.. We congratulate all of these staff members and look forward to their return in the future.

**YEAR 12 YEAR ADVISER CHANGE**

With Mrs Sandy Golder now on Maternity leave, Ms Anna Murphy (PD/H/PE) will relieve as Year 12 Year Adviser. Mrs Hanadi Macinante will become her Year 12 Assistant Year Adviser until Year 12 finish school later this year. Please feel free to contact either staff member if there are any concerns with your Year 12 child.

**AUSTRALIAN TERTIARY ADMISSION RANK (ATAR) - NOT UAI**

There has been a recent minor change to the terminology and definition of the Year 12 ranking for university entry from 2009. It will no longer be called the 'UAI' and instead becomes the ATAR (Australian Tertiary Admission Rank). Year 12 have had some of the key messages and changes explained in some detail to them and can approach Mr Griffiths, our Careers Adviser, should they need more information or a closer examination of the comparative tables between UAI and ATAR.

**PERMISSION FOR PHOTOGRAPHS**

All students who do not wish to be photographed or published in photographs on the school website, within the school or in a

**YEAR 10 2009—  
INTO YEAR 11 2010  
SUBJECT  
SELECTION  
EVENING**

**All parents, guardians and Year 10 students are invited to our Subject Selection Evening on Tuesday June 23rd in the school hall. The evening commences at 6.30pm.**

representative capacity for the school should notify the Principal in writing.

**NEW HSIE TEACHER AND SUPPORT UNIT APPOINTMENTS**

Mr Marco Bisoglio has been appointed to replace Mrs Lavinia Sullivan (promoted to HT Mentor at Doonside HS) as a new Business Studies teacher. He commences work quite soon. In addition, Ms Robin Smith and Mr Michael Nolan have been confirmed as permanent appointments in our Support Unit. We welcome their continued positive contributions to the lives of our students.

**YEAR 7-10 SCHOOL REPORTS**

All Year 7-10 reports will be issued at the upcoming Parent-Teacher Night. They will be presented in a new school portfolio (financed chiefly by the school P&C) on new school paper. This also applies to Year 11 who receive theirs soon through their regular classes.

Have a good school holiday break. All the best.

**SCHOOL ENDS FRIDAY 10TH JULY AND RETURNS ON TUESDAY 28TH JULY**

Regards,

Tim McCallum (Principal).